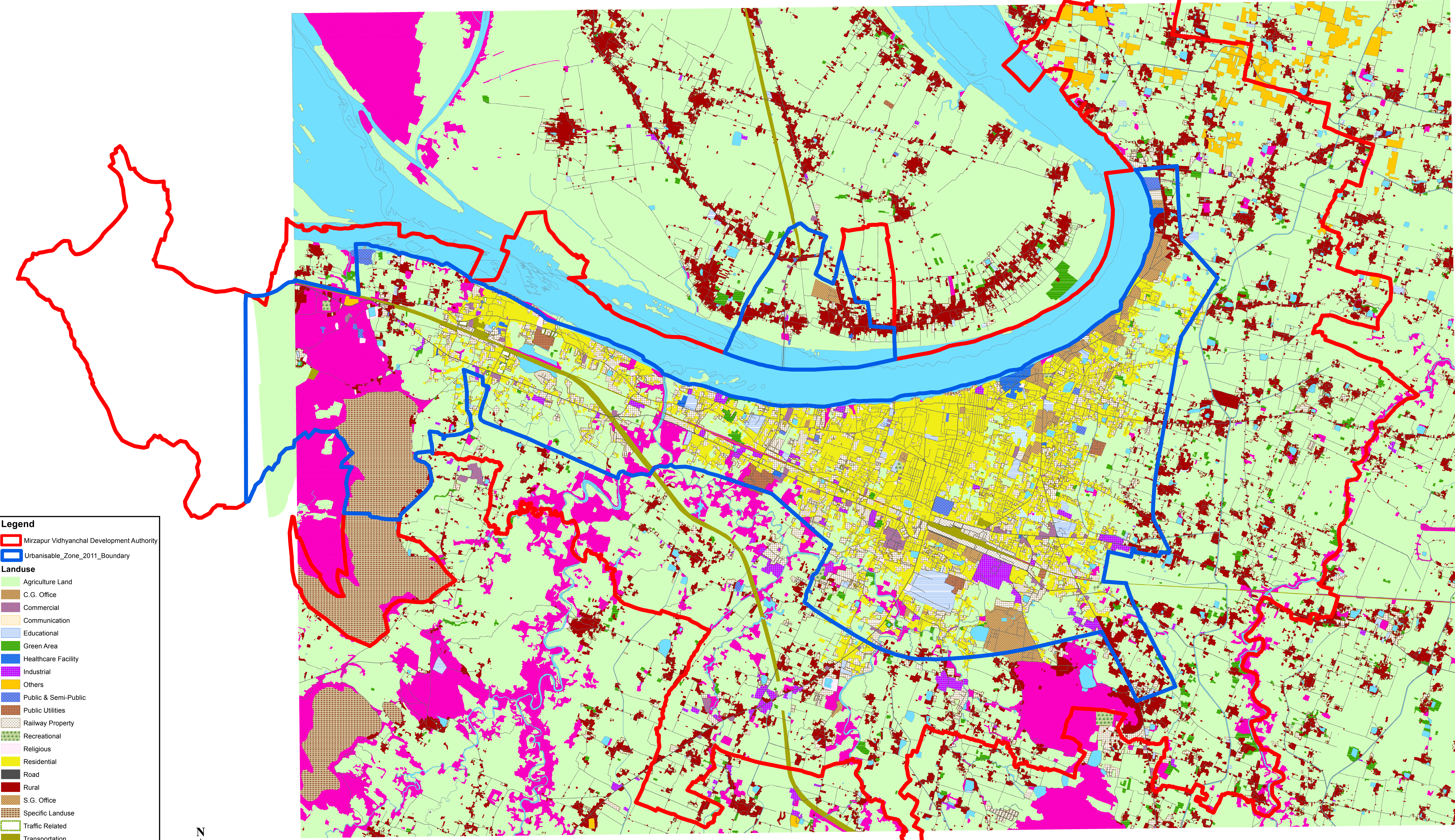


Existing Landuse Mirzapur Vidhyanchal-2021



Legend

- Mirzapur Vidhyanchal Development Authority
- Urbanisable_Zone_2011_Boundary

Landuse

- Agriculture Land
- C.G. Office
- Commercial
- Communication
- Educational
- Green Area
- Healthcare Facility
- Industrial
- Others
- Public & Semi-Public
- Public Utilities
- Railway Property
- Recreational
- Religious
- Residential
- Road
- Rural
- S.G. Office
- Specific Landuse
- Traffic Related
- Transportation
- Vacant Land
- Wasteland
- Water Body
- Wetland

